

Brannon Harrison
Land & Farm Agent
Broker/Owner
334-504-2703

510 N. Main Street
Opp, Alabama 36467
(334) 493-0129



Kim Turman
Residential Agent
334- 208-0724

First Quarter 2023 Newsletter



102 Fay Street Opp

*** 3 Bedroom 1.5 Bath Home**
*** Screened in back porch**
Call for a showing today

We Need Land!!!

Good Time To Sell

Prices are Strong!!!

Recently Listed



3 Bed / 2 Bath Home
on 50 acres
Opp MLS # 23015



3 Bed / 2 Bath home
Opp MLS # 23039
Alexander Avenue



3 Bed / 1 Bath Home
Opp MLS # 23060
Spurlin Street



3 Bed / 3 Bath
7.4 Acres
Opp MLS #23124
Glen Street



3 Bed / 2 Bath 50 Acres
Andalusia MLS # 23170
Opine Road

Recently Sold



20 acres
Opp



3 Bed/ 3 Bath
on 1.35 ac Opp



41.6 acres
Opp



30.4 acres
Opp



3 Bed/ 3 Bath
Opp



2 Bed/ 2 Bath
Opp



3 Bed/ 2 Bath on
1 ac Brantley



2.88 acres- 2 lots
Opp



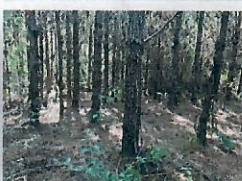
16 acres
Brantley



40 acres
Opp



3 Bed/ 2 Bath on
5 acres Andalusia



4 acres
Opp

**Small parcels coming soon
in Loango Area
on Rosin Ridge Road.
No Restrictions
Power and Water Available**

Check out all of our listings on the web

Market Update

1st Quarter 2023

Data Gathered From Paragon MLS Website,

Covington County Board Combined Board Sales

** Includes City of Andalusia and West Portion
of Coffee County

First Qtr Home Sales in Opp

Number of Homes Sold: 10

Fourth Qtr: 15

First Qtr Covington Cty Land Sales

Land Sales: 28

Fourth Qtr: 27

First Qtr Home Sales in Covington Cty

Number Of Homes Sold: 56

Fourth Qtr: 74

First Qtr Average Sales Price of Homes

In Covington County: \$ 171,751

Fourth Qtr: \$ 163,217

First Qtr. Home Sales in Andalusia

Number of Homes Sold: 25

Fourth Qtr: 24

Fourth Qtr. Average Sales Price of Homes

In Opp: \$ 162,333

First Qtr Average Sales Price of Homes

In Opp: \$ 98,280

If you are interested in Listing your
property with Covington Realty,
please contact us at 334-493-0129
or stop by our office-
510 N. Main Street Opp

Kim 334-208-0724

Brannon 334-504-2703

CovingtonCountyHomesAndLand.com